

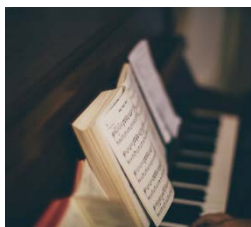


Advanced Computing For Research

**EGI** is a federation of data centres delivering advanced computing services to scientists, multinational projects and research infrastructures.

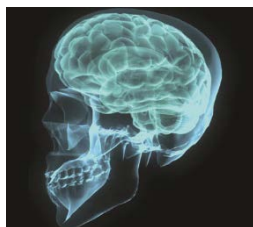
## Examples of EGI use cases

### Music analysis



Peachnote is a music score search engine. Peachnote uses EGI's **Cloud Compute** service to give their visitors access to music data.

### Image data analysis



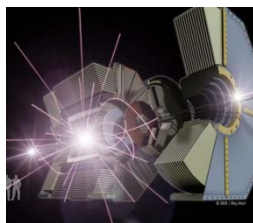
The Virtual Imaging Platform is a web portal for image data analysis. VIP can be used by researchers thanks to EGI's **HTC** and **Online Storage** services.

### Earth observation



Terradue delivers a cloud platform for earth sciences. Their platform is being extended using EGI's **Cloud Compute** service.

### High Energy Physics



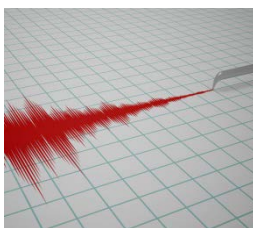
The Belle II experiment is looking into the balance between matter and antimatter in our Universe. Belle II uses EGI's **HTC** service.

### Gamma-ray astronomy



The H.E.S.S. experiment uses EGI's **HTC** to perform simulations on a large scale and get information about the properties of cosmic rays.

### Natural hazards



A team of seismologists used EGI's **HTC** service to gain insights on the Amatrice earthquake that took place in Italy in August 2016.

### Structural biology



Haddock is a web portal used by scientists to model the structure of proteins and other molecules. Haddock relies on EGI's **HTC**.

### Bioinformatics



Chipster is a user-friendly platform for data analysis with a large collection of reference genomes. Chipster relies on EGI's **Cloud Compute**.